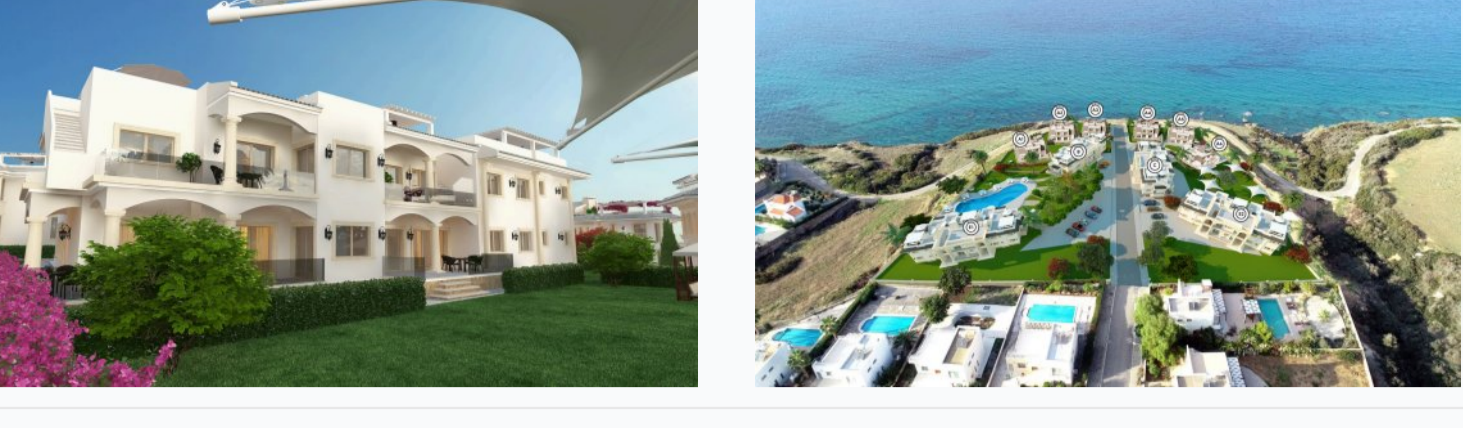


Poseidon residential complex

Location **Kyrenia, Esentepe**



About the project Carrington

Developer Carrington Group
Start of sale 01.01.2022
Key handover 2023
Houses/blocks 10
Building floor 2 Min 2 Max
Units total 20 - 2+1, 28 - 3+1

Distance to the sea - 100 m

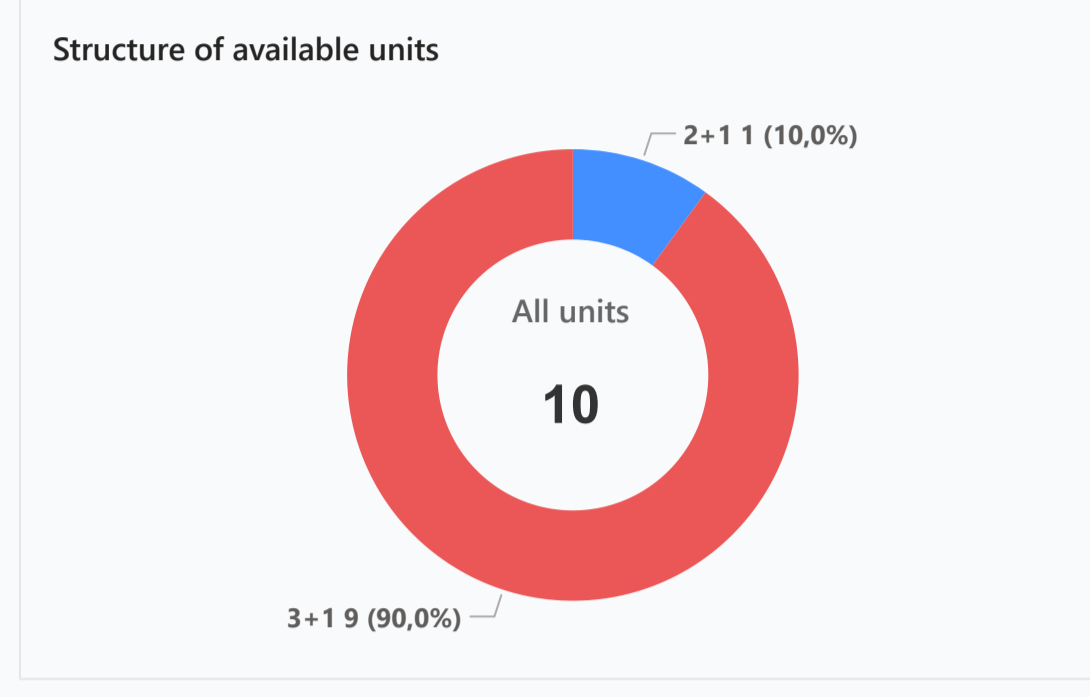
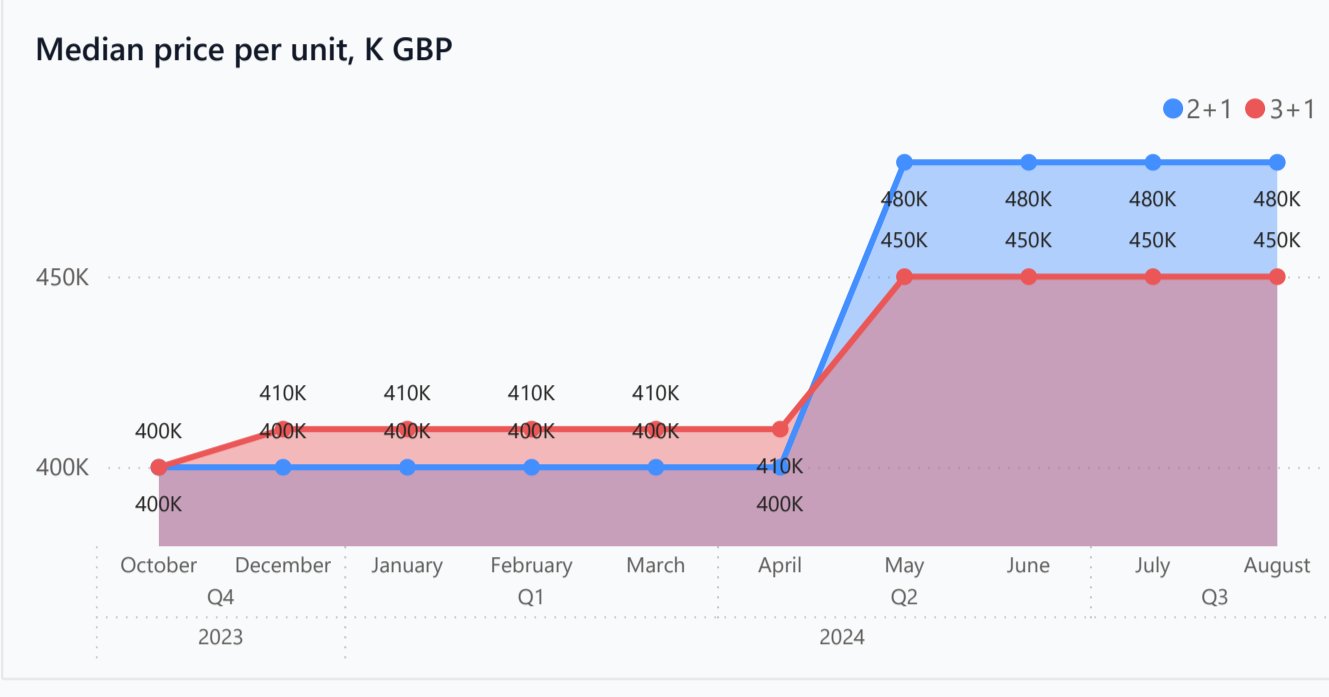
Distance to key locations:
 Esentepe Public Beach - 5.1 km, Three Brothers Market - 5.7 km, Bektaş Market - 9.7 km, Korineum Golf - 12.8 km, Korineum Golf Resort Hotel - 13.3 km, Alagadi Turtle Beach - 14.8 km, Elexus Hotel & Resort & Spa - 19.1 km, Iskele Sağlık Ocağı - 23.8 km, Ercan - 26 km, Uluslararası Kıbrıs Üniversitesi - 26.2 km

New prestigious seafront project "Poseidon" with magnificent views and sought after location, just 100m to the sea. Great investment opportunity of two & three bedroom apartments and four bedroom villas by the east coastal area within beautiful surroundings. The project consists of five apartment blocks and six villas overlooking panoramic views of the sea. The unspoiled beauty of this area will allow the residents to enjoy the tranquility and mild Mediterranean climate with sunshine all year round. This exclusive project offers cutting-edge architecture, top quality finishing, and elegant design.

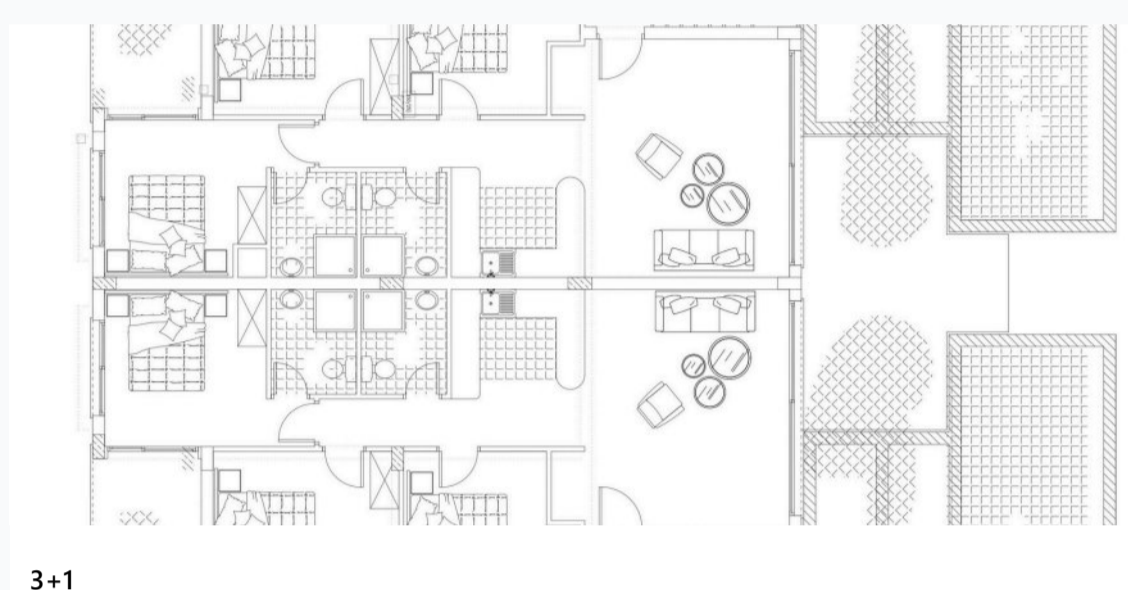
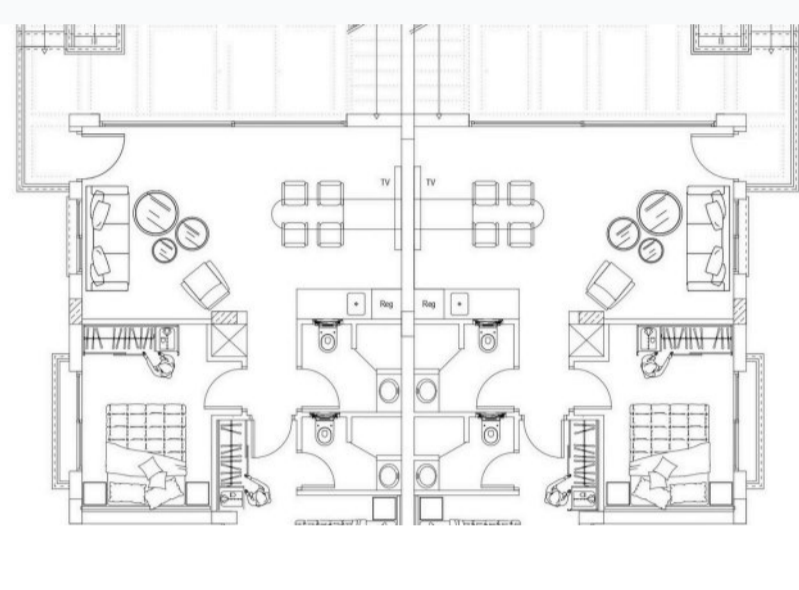
Complex infrastructure

- Automatic Entrance Gate
- Central satellite
- Closed territory
- Open pool
- Parking

Available units 10 / 48 total



Plans



Payment plans Deposit (non-refundable) 5000 GBP

Option	Down payment	Installments months	Discount	Offer
Option 1	35 %	36	-	-
Option 2	-	-	-	-
Option 3	-	-	-	-
Option 4	-	-	-	-

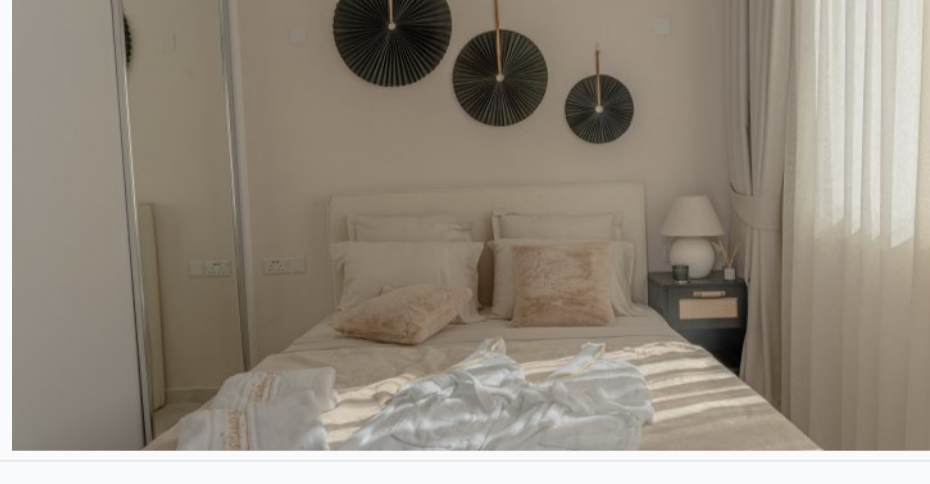
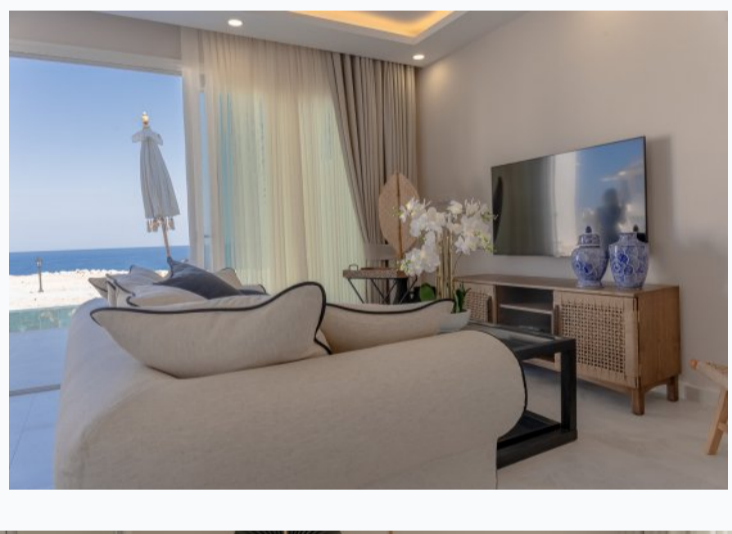
Special offer Fully furnished design package Rental guarantee no

Trafo 3490 GBP Resale after 100% Maintenance fee 90 GBP monthly Rental services 40 %

Details

Bedrooms	Subtype	Block	Unit №	Floor	View	Bathroom	Internal area, sq. m	Balcony/ Terrace, sq. m	Rooftop terrace, sq. m	Garden, sq. m	Gross covered area, sq. m	Current price, GBP	Price per sqm, GBP
2+1	Flat	A6	3	01				25	75		175	479 950	2 743
3+1	Flat	A1	1	0				50			155	549 950	3 548
3+1	Flat	A6	1	0				50			155	549 950	3 548
3+1	Flat	B	1	0				30			135	449 950	3 333
3+1	Flat	B	4	01				15	80		200	469 950	2 350
3+1	Flat	C	1	0				30			135	399 950	2 963
3+1	Flat	C	3	0				30			135	449 950	3 333
3+1	Flat	C	6	01				15	80		200	449 950	2 250
3+1	Flat	C	4	01				15	80		200	499 950	2 500
3+1	Flat	E2	1	0				30			135	449 950	3 333

Interior specification



- Air Conditioner
- Double glazed windows
- Fitted wardrobes in each bedroom
- Granite kitchen worktop
- Toilet integrated in the walls
- Underfloor heating in bathrooms

Exterior specification



- BBQ place on the roof
- Energy saving bricks
- Glass fence balcony
- Jacuzzi
- Private pool
- Shower on the roof terrace
- Terracing with inbuilt lighting & power sockets

Location of complex

